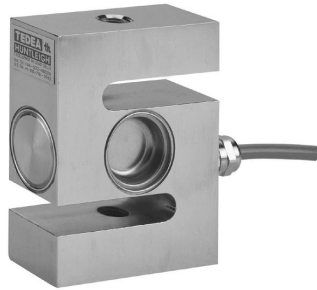


## Tension Compression Load Cell



Model 619 is a low cost tension-compression load cell made from nickel plated alloy steel and is suitable for use in a wide range of weighing, process weighing, force measurement and industrial process control applications.

Protected to meet IP67 requirements, the construction of the 619 load cell allows its use in most industrial process applications. For IP68 requirements, select the fully welded

### FEATURES

- Capacities 1500 - 5000Kg
- Nickel plated alloy steel
- IP67 protection
- For use in tension and compression
- 6 wire (sense) circuit
- Output standardized to  $\pm 0.1\%$

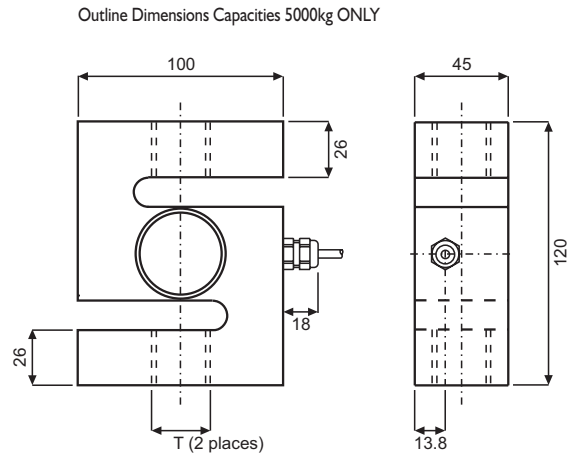
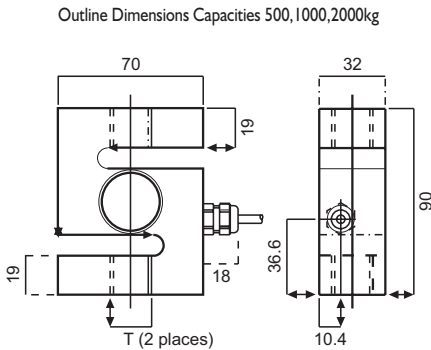
stainless steel model 620, which shares the same dimensions as model 619.

The additional sense wires compensate for changes in lead resistance due to temperature change and/or cable extension. Complete compensation of changes in lead resistance is achieved by feeding this voltage into appropriate electronics.

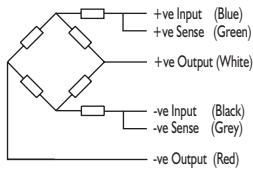
| SPECIFICATIONS                              |   |                 |                 |  |
|---|---|-----------------|-----------------|--|
| GRADE                                       | E   | F               | G               | UNITS  |
| Rated Capacities                            | 1500, 2000, 3000, 5000                            |                 |                 | kg   |
| Rated Output                                | 2.0 $\pm$ 0.1%                                    |                 |                 | mV/V   |
| Total Error                                 | 0.05  | 0.03            | 0.02            | $\pm$ % of rated output  |
| Zero Return after 30 mins                   | 0.05  | 0.03            | 0.017           | $\pm$ % of applied load  |
| Temperature Effect: On output<br>On zero    | 0.003<br>0.01                                     | 0.0014<br>0.006 | 0.0012<br>0.004 | $\pm$ % of applied load/ $^{\circ}$ C<br>$\pm$ % of rated output/ $^{\circ}$ C |
| Zero Balance                                | 5   | 3               | 2               | $\pm$ % rated output   |
| Temperature Range: Operating<br>Compensated | - 30 to + 70<br>- 10 to + 40                      |                 |                 | $^{\circ}$ C   |
| Safe Overload                               | 150   |                 |                 | % of rated capacity  |
| Ultimate Overload                           | 300   |                 |                 | % of rated capacity  |
| Excitation: Recommended<br>Maximum          | 10<br>15  |                 |                 | Volts AC or DC   |
| Input Impedance                             | 380 $\pm$ 20                                      |                 |                 | Ohms   |
| Output Impedance                            | 350 $\pm$ 3                                       |                 |                 | Ohms   |
| Insulation Impedance                        | > 2000  |                 |                 | MegaOhms   |
| Deflection at Rated Capacity                | < 0.4   |                 |                 | mm   |
| Weight                                      | 1500 and 2000 kg: 0.9    3000 and 5000kg: 1.9     |                 |                 | kg   |
| Construction                                | Stainless Steel                                   |                 |                 |  |
| Environmental Protection                    | IP67  |                 |                 |  |
| Cable                                       | 5m, 6 conductors, 26AWG, braid shield, PVC jacket |                 |                 |  |

Tension Compression Load Cell

**DIMENSIONS** in millimeters



Wiring Schematic Diagram



Thread Type 'T' By Capacity

| Capacity | Thread Type |
|----------|-------------|
| 500 kg   | M12 x 1.75  |
| 1000kg   | M16 x 2.0   |
| 2000kg   | M16 x 2.0   |
| 5000kg   | M24 x 2.0   |

All Dimensions in mm

**VISHAY TRANSDUCERS (VT) - SALES OFFICES**

**G&P LIDÉN WEIGHING AB**

Bilgatan 3  
 S-442 40 Kungälv  
 Sweden  
 Tel: +46 (0) 303 209 450  
 Fax: +46 (0) 303 59 400

**Contact Info**

E-mail  
[info@liden-weighing.se](mailto:info@liden-weighing.se)  
 Website  
[www.liden-weighing.com](http://www.liden-weighing.com)